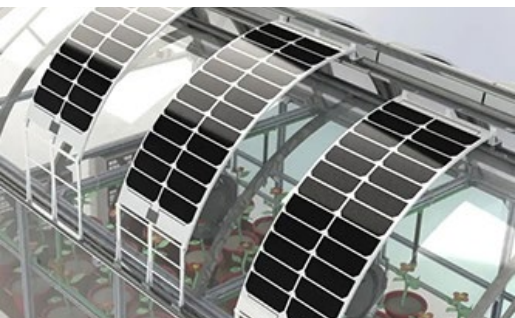
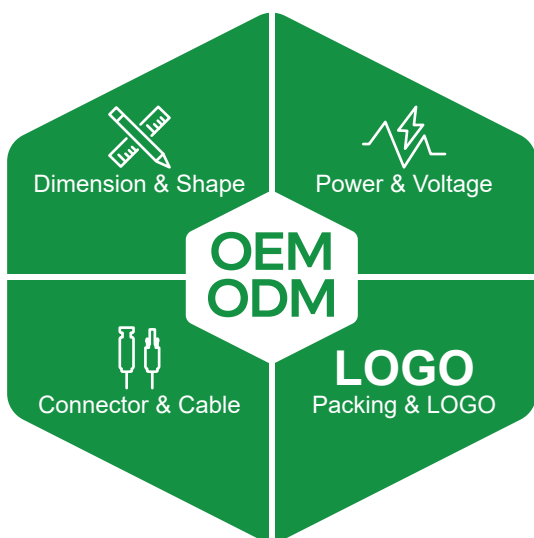


»» Semi Flexible Solar Panel ««



Customized



Warranty & Certificate



※Quality warranty in 3 years, Any quality problems will be repaired or replaced if within the warranty period.

CE RoHS SGS IEC



SHENZHEN SHINE SOLAR CO.,LTD

📍 Building D, Yabian xueziwei Industrial park, Yabian community, Shajing town, Bao'an district, Shenzhen

✉ info@shinesolartech.com

🌐 www.shinesolartech.com

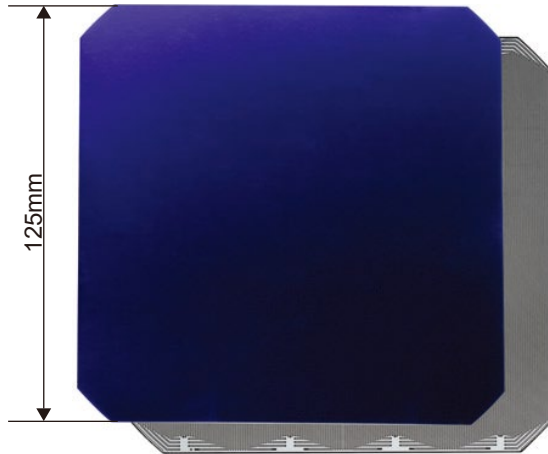
☎ 86 -755-23129901

SUNPOWER FLEXIBLE SOLAR PANEL

◆ SunPower (USA corporation), MAXEON GEN 3 solar cell, >24% conversion rate, Selected for solar car/solar aircraft.

◆ The Back-contact technology contributes to 20~30% higher efficient than normal mono cells, And excellent performance in low-light conditions.

◆ The anti-corrosion ETFE materials and its durable flexibility are good choice for the curved surface in extreme installation circumstance.



SUNPOWER MAXEON Gen 3

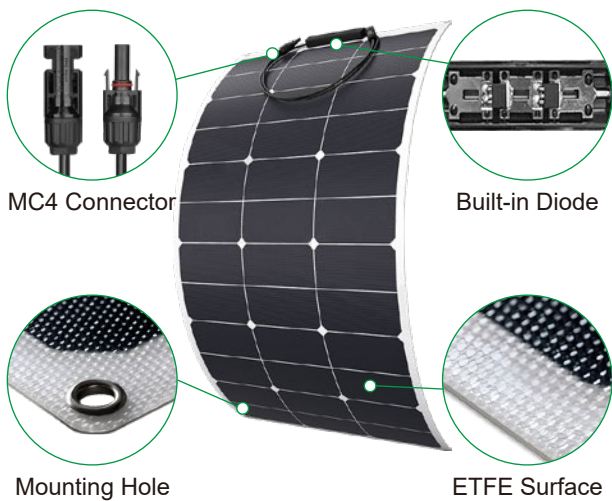


Cell Efficiency

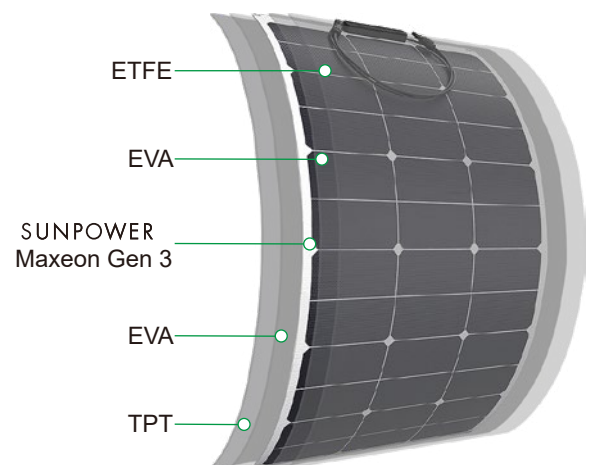


Anti-Corrosion and
Anti-Aging

1. Product Detail



2. Structure Layers



3. The Main Features



Excellent Low Light
Power Generation



Extremely Flexible



IP67 Waterproof



Ulta-Thin & Ultra-Light

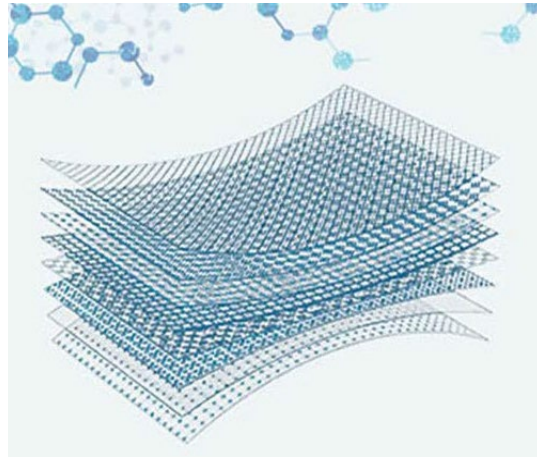
4. Specifications

MODEL	Maximum Power/Pmax	Operating Voltage/Vmp	Operating Current/Imp	Open Circuit Voltage/Voc	Short Circuit Current/Isc	Dimension	Weight
SN-EH20W	20W	21.6V	0.93A	25.92V	1.02A	434*277*3mm	0.3kg
SN-EH30W	30W	19.2V	1.56A	23.04V	1.72A	560*277*3mm	0.5kg
SN-EH40W	40W	19.2V	2.08A	23.04V	2.29A	535*378*3mm	0.6kg
SN-EH60W	60W	19.2V	3.13A	23.04V	3.44A	560*540*3mm	0.7kg
SN-EH65W	65W	21.6V	3.01A	25.92V	3.31A	625*540*3mm	0.8kg
SN-EH75W	75W	24V	3.13A	28.8V	3.44A	685*535*3mm	0.9kg
SN-EH90W	90W	28.8V	3.13A	34.56V	3.44A	810*540*3mm	1.0kg
SN-EH105W	105W	16.8V	6.25A	20.16V	6.88A	920*540*3mm	1.2kg
SN-EH120W	120W	19.2V	6.25A	23.04V	6.88A	1050*540*3mm	1.6kg
SN-EH135W	135W	21.6V	6.25A	25.92V	6.88A	1180*540*3mm	1.8kg
SN-EH150W	150W	24V	6.25A	28.8V	6.88A	1305*540*3mm	2.0kg
SN-EH165W	165W	26.4V	6.25A	31.68V	6.88A	1435*540*3mm	2.2kg
SN-EH185W	185W	29.4V	6.29A	35.28V	6.92A	1320*665*3mm	2.5kg
SN-EH205W	205W	33V	6.21A	39.6V	6.83A	1435*665*3mm	2.7kg
SN-EH225W	225W	36V	6.25A	43.2V	6.88A	1300*800*3mm	2.9kg
SN-EH245W	245W	39.6V	6.19A	47.52V	6.81A	1435*800*3mm	3.2kg
SN-EH270W	270W	43.2V	6.25A	51.84V	6.88A	1560*800*3mm	3.5kg
SN-EH290W	290W	46.8V	6.2A	56.16V	6.82A	1680*800*3mm	4.0kg
SN-EH315W	315W	50.4V	6.25A	60.48V	6.88A	1810*800*3mm	4.3kg
SN-EH340W	340W	54.6V	6.23A	65.52V	6.85A	1680*920*3mm	4.7kg
SN-EH365W	365W	58.8V	6.21A	70.56V	6.83A	1810*920*3mm	5.2kg

* The shape, power, connector, packing type can be customized

COMPOSITE FLEXIBLE SOLAR PANEL

- ◆ Made of High efficiency Monocrystalline PERC solar cell.
- ◆ The special high strength polymer material intergrated, Increase the flexibility and durability, To protect the cell cracked from the bending, External impact, Trample ect. Extend the solar panel lifespan 2~3 years.
- ◆ Thanks to the high polyer materials, The gross weight reduce 15~20%, Ideal for the projects require lightweight and flexibility.



High Polyer Materials

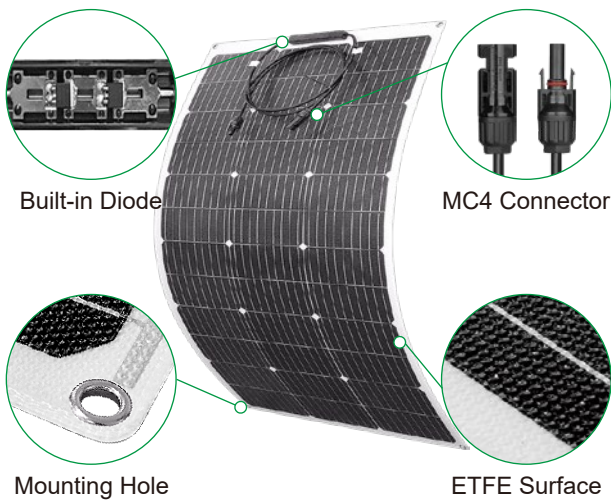
-20%

Weight Reduce
15~20%

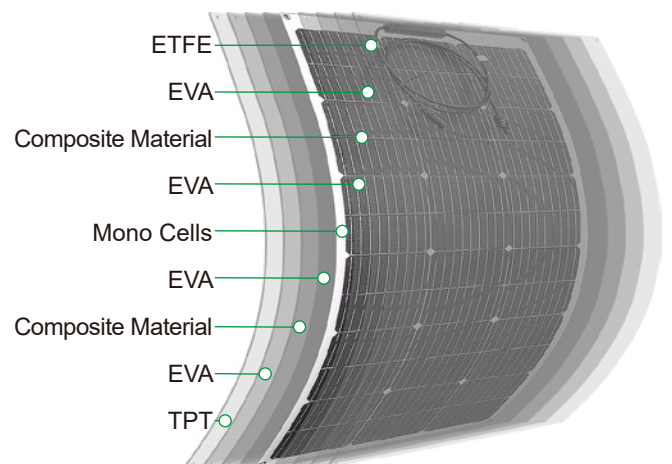
>23%

Cell Efficiency

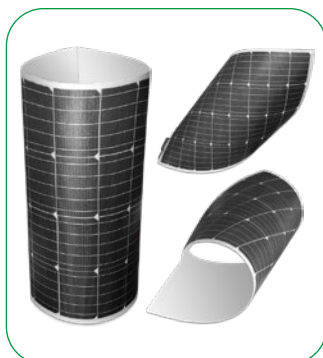
1. Product Detail



2. Structure Layers



3. The Main Features



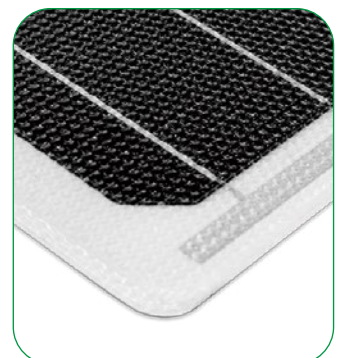
Extremely Flexible



IP68 Waterproof



Durable and Strong



Ultrar-Thin & Ultra-Light

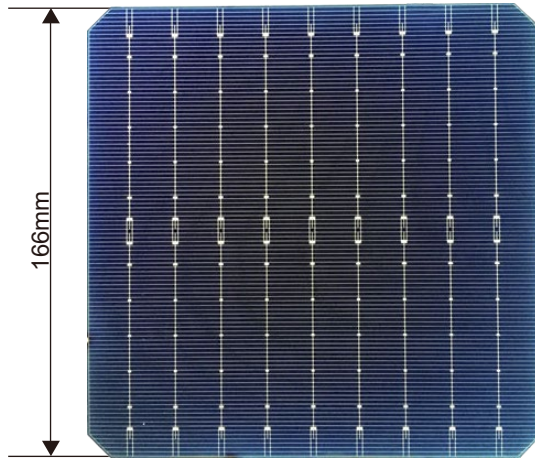
4. Specifications

MODEL	Maximum Power/Pmax	Operating Voltage/Vmp	Operating Current/Imp	Open Circuit Voltage/Voc	Short Circuit Current/Isc	Dimension	Weight
SN-MF20W	20W	19.8V	1.01A	23.76V	1.11A	450*277*2mm	0.3kg
SN-MF25W	25W	19.8V	1.26A	23.76V	1.39A	560*277*2mm	0.5kg
SN-MF35W	35W	19.8V	1.77A	23.76V	1.95A	560*378*2mm	0.6kg
SN-MF55W	55W	19.8V	2.78A	23.76V	3.06A	560*535*2mm	0.7kg
SN-MF60W	60W	20.5V	2.93A	24.6V	3.22A	625*535*2mm	0.8kg
SN-MF70W	70W	19.8V	3.54A	23.76V	3.89A	730*535*2mm	0.9kg
SN-MF80W	80W	20.5V	3.9A	24.6V	4.29A	790*535*2mm	1.0kg
SN-MF100W	100W	19.8V	5.05A	23.76V	5.56A	1050*535*2mm	1.2kg
SN-MF110W	110W	20.5V	5.37A	24.6V	5.91A	1140*535*2mm	1.6kg
SN-MF120W	120W	23.1V	5.19A	27.72V	5.71A	1220*535*2mm	1.8kg
SN-MF140W	140W	26.4V	5.3A	31.68V	5.83A	1400*535*2mm	2.0kg
SN-MF160W	160W	29.7V	5.39A	35.64V	5.93A	1570*535*2mm	2.2kg
SN-MF190W	190W	17.6V	10.8A	21.12V	11.88A	1400*700*2mm	2.5kg
SN-MF220W	220W	19.8V	11.11A	23.76V	12.22A	1570*700*2mm	2.7kg
SN-MF240W	240W	22V	10.91A	26.4V	12A	1710*700*2mm	2.9kg
SN-MF270W	270W	24.7V	10.93A	29.64V	12.02A	1570*860*2mm	3.2kg
SN-MF300W	300W	27.5V	10.91A	33V	12A	1710*860*2mm	3.5kg
SN-MF330W	330W	30.25V	10.91A	36.3V	12A	1880*860*2mm	4.0kg
SN-MF360W	360W	33V	10.91A	39.6V	12A	1710*1035*2mm	4.3kg

* The shape, power, connector, packing type can be customized

MONO FLEXIBLE SOLAR PANEL

- ◆ Made of High efficiency Monocrystalline PERC solar cell.
- ◆ Thin & lightweight materials, Reduce 70% weight than the conventional glass and framed solar panels.
- ◆ The bendable curved to maximum 30 degree, It is the most cost-effective option to a lightweight but less flexibility rate as consideration.



Monocrystalline Solar Cell

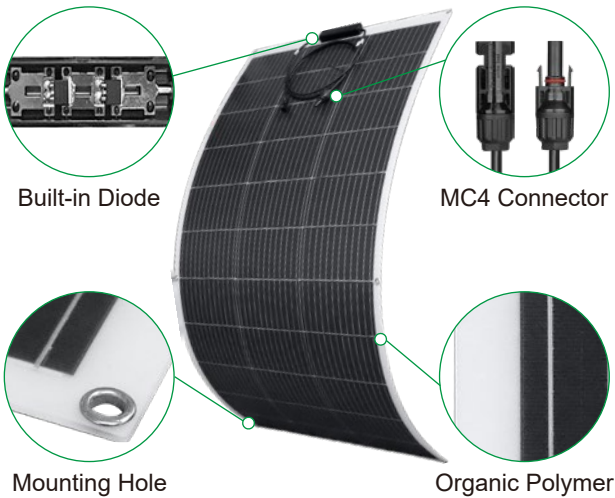


Cell Efficiency

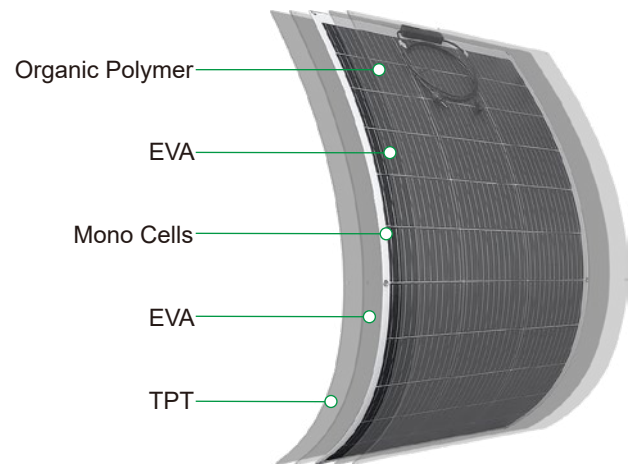


Anti-Corrosion and
Anti-Aging

1. Product Detail



2. Structure Layers



3. The Main Features



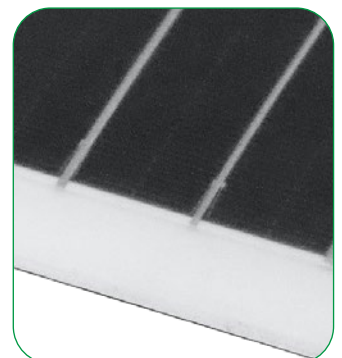
Highly Reliable



Extremely Flexible



IP67 Waterproof



Ultrathin & Ultralight

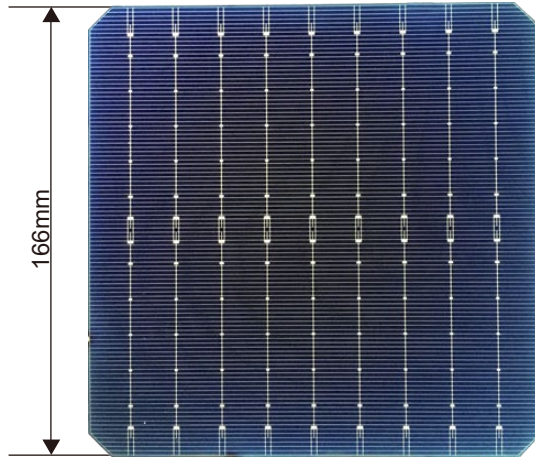
4. Specifications

MODEL	Maximum Power/Pmax	Operating Voltage/Vmp	Operating Current/Imp	Open Circuit Voltage/Voc	Short Circuit Current/Isc	Dimension	Weight
SN-MH20W	20W	19.8V	1.01A	23.76V	1.11A	450*277*3mm	0.3kg
SN-MH25W	25W	19.8V	1.26A	23.76V	1.39A	560*277*3mm	0.5kg
SN-MH35W	35W	19.8V	1.77A	23.76V	1.95A	560*378*3mm	0.6kg
SN-MH55W	55W	19.8V	2.78A	23.76V	3.06A	560*535*3mm	0.7kg
SN-MH60W	60W	20.5V	2.93A	24.6V	3.22A	625*535*3mm	0.8kg
SN-MH70W	70W	19.8V	3.54A	23.76V	3.89A	730*535*3mm	0.9kg
SN-MH80W	80W	20.5V	3.9A	24.6V	4.29A	790*535*3mm	1.0kg
SN-MH100W	100W	19.8V	5.05A	23.76V	5.56A	1050*535*3mm	1.2kg
SN-MH110W	110W	20.5V	5.37A	24.6V	5.91A	1140*535*3mm	1.6kg
SN-MH120W	120W	23.1V	5.19A	27.72V	5.71A	1220*535*3mm	1.8kg
SN-MH140W	140W	26.4V	5.3A	31.68V	5.83A	1400*535*3mm	2.0kg
SN-MH160W	160W	29.7V	5.39A	35.64V	5.93A	1570*535*3mm	2.2kg
SN-MH190W	190W	17.6V	10.8A	21.12V	11.88A	1400*700*3mm	2.5kg
SN-MH220W	220W	19.8V	11.11A	23.76V	12.22A	1570*700*3mm	2.7kg
SN-MH240W	240W	22V	10.91A	26.4V	12A	1710*700*3mm	2.9kg
SN-MH270W	270W	24.7V	10.93A	29.64V	12.02A	1570*860*3mm	3.2kg
SN-MH300W	300W	27.5V	10.91A	33V	12A	1710*860*3mm	3.5kg
SN-MH330W	330W	30.25V	10.91A	36.3V	12A	1880*860*3mm	4.0kg
SN-MH360W	360W	33V	10.91A	39.6V	12A	1710*1035*3mm	4.3kg

* The shape, power, connector, packing type can be customized

PCB FLEXIBLE SOLAR PANEL

- ◆ Made of High efficiency Monocrystalline PERC solar cell.
- ◆ Both side resistance corrosion ETFE, And the embedded 1.6mm fiberglass ensure it becomes the most robust flexible panels. Effective solved the dislamination, Cracking and corrosion matters.
- ◆ It can glued on roof directly with less than 10 degree curve, Allows the trampling on marine deck, RV roof.



Monocrystalline Solar Cell

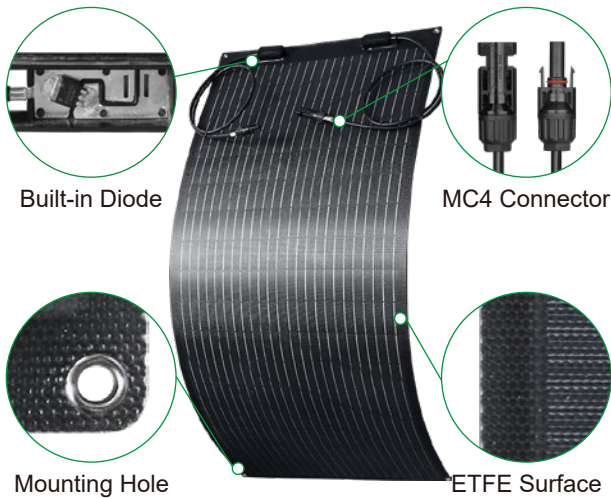
+PCB

1.6mm Fiberglass

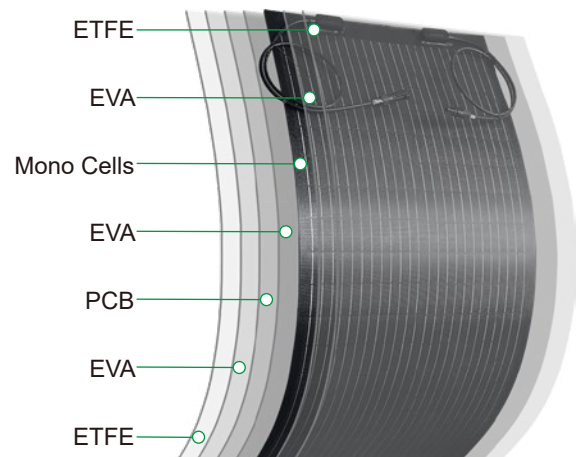
>23%

Cell Efficiency

1. Product Detail



2. Structure Layers



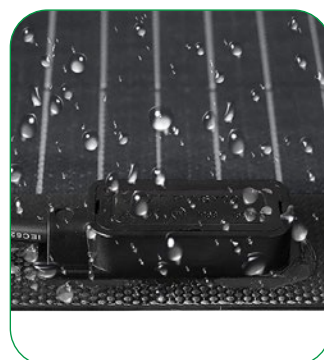
3. The Main Features



Flexible



Durable



IP68 Waterproof



Anticollision

4. Specifications

MODEL	Maximum Power/Pmax	Operating Voltage/Vmp	Operating Current/Imp	Open Circuit Voltage/Voc	Short Circuit Current/Isc	Dimension	Weight
SN-MPH20W	20W	19.8V	1.01A	23.76V	1.11A	450*277*3mm	0.5kg
SN-MPH35W	35W	19.8V	1.77A	23.76V	1.95A	560*378*3mm	0.9kg
SN-MPH60W	60W	20.5V	2.93A	24.6V	3.22A	625*535*3mm	1.5kg
SN-MPH80W	80W	20.5V	3.9A	24.6V	4.29A	790*535*3mm	1.9kg
SN-MPH100W	100W	19.8V	5.05A	23.76V	5.56A	1050*535*3mm	2.5kg
SN-MPH120W	120W	23.1V	5.19A	27.72V	5.71A	1220*535*3mm	2.9kg
SN-MPH160W	160W	29.7V	5.39A	35.64V	5.93A	1570*535*3mm	3.7kg
SN-MPH220W	220W	19.8V	11.11A	23.76V	12.22A	1570*700*3mm	4.8kg
SN-MPH240W	240W	22V	10.91A	26.4V	12A	1710*700*3mm	5.3kg

* The shape, power, connector, packing type can be customized

5. Customized Photo

